

CHECK REVISION BEFORE USE

LONDON UNDERGROUND LIMITED

JUBILEE LINE

STRATFORD MARKET DEPOT


DIAGRAM OF SIGNALLING

AND

CURRENT RAIL SECTIONS

FOR

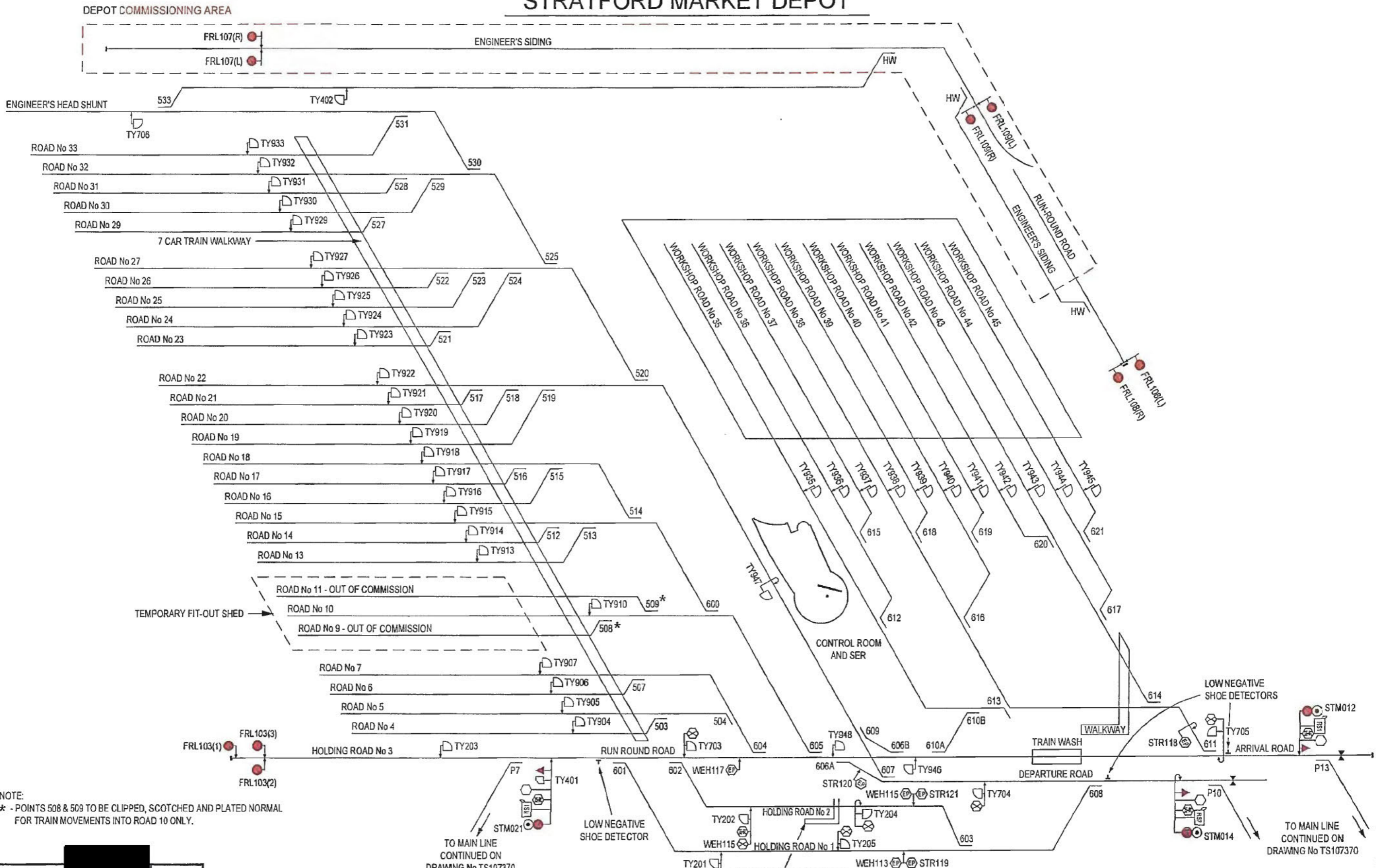
TRAFFIC CONTROLLER

APPROVED		ISSUE
DATE	10-6-99	02

6140-TS-107104/1

NOTE:  
FOR SIGNAL AND CURRENT RAIL SYMBOLS KEY  
SEE DRG No 6140-TS-107918

# JUBILEE LINE STRATFORD MARKET DEPOT



NOTE:  
\* - POINTS 508 & 509 TO BE CLIPPED, SCOTCHED AND PLATED NORMAL FOR TRAIN MOVEMENTS INTO ROAD 10 ONLY.

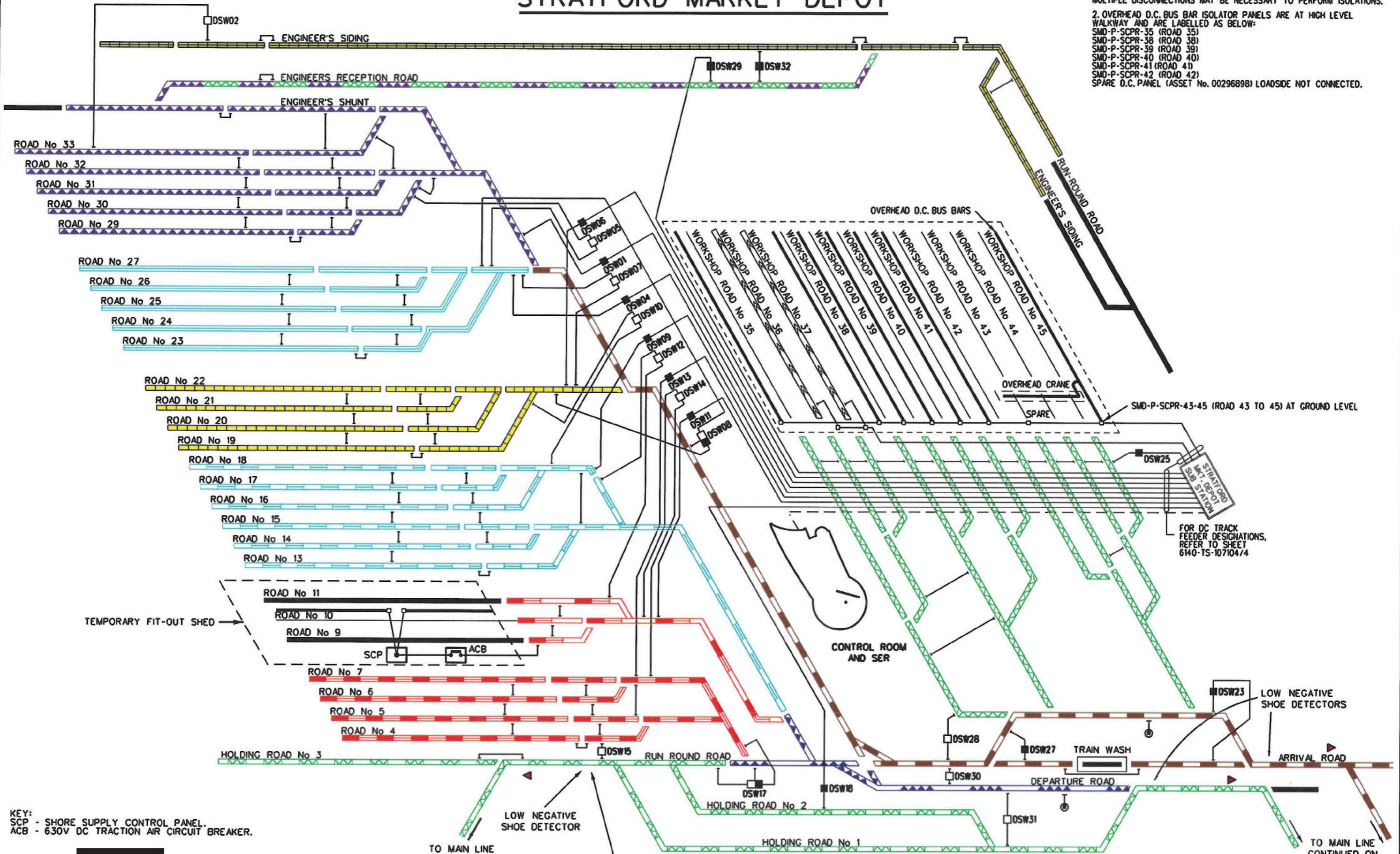
APPROVED		ISSUE
DATE	28-4-10	11

6140 - TS.107104 / 2



# JUBILEE LINE STRATFORD MARKET DEPOT

- NOTES.
- ENGINEER'S SIDING AND TRAIN WASH ROAD ARE SUPPLIED FROM MORE THAN ONE POSITION. MULTIPLE DISCONNECTIONS MAY BE NECESSARY TO PERFORM ISOLATIONS.
  - OVERHEAD D.C. BUS BAR ISOLATOR PANELS ARE AT HIGH LEVEL WALKWAY AND ARE LABELLED AS BELOW:  
 SMD-P-SCPR-35 (ROAD 35)  
 SMD-P-SCPR-38 (ROAD 38)  
 SMD-P-SCPR-39 (ROAD 39)  
 SMD-P-SCPR-40 (ROAD 40)  
 SMD-P-SCPR-41 (ROAD 41)  
 SMD-P-SCPR-42 (ROAD 42)  
 SPARE D.C. PANEL (ASSET No. 00296898) LOADSIDE NOT CONNECTED.



APPROVED	ISSUE
DATE 26/3/19	09

TO MAIN LINE CONTINUED ON DRAWING No TS107370

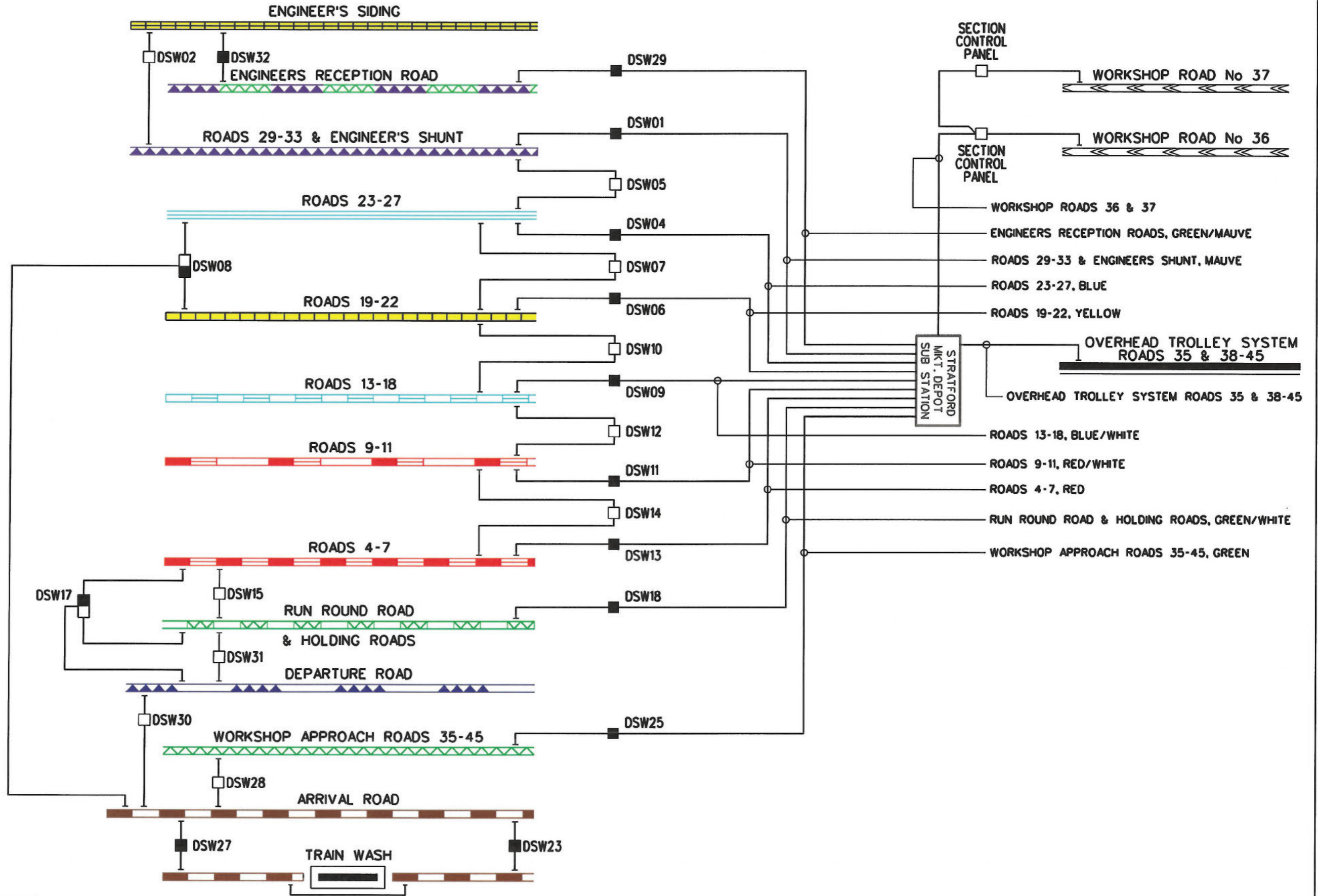
ALL GAPS IN TRACTION RAILS ACROSS WALKWAY ON ROADS 4-33 ARE 15 METRES

TO MAIN LINE CONTINUED ON DRAWING No TS107370

6140-TS-107104/3



# JUBILEE LINE STRATFORD MARKET DEPOT



APPROVED		ISSUE
DATE	26/3/19 21/3/19	03

6140-TS-107104/4

**REVISION HISTORY**

Rev.	Date	Description	Shts. Affected	Rev'd By	Prep'd	Chkd	App'd
01	23.07.98	ORIGINAL ISSUE FOR TRIAL OPERATIONS	ALL	BDS	BDT		
02	23.03.99	SYMBOL KEY REMOVED FROM FRONT SHEET	1, 5 & 6	GD	AS/BDT		
03	10.06.99	PHASE 1 SUBSTAGE 2.2 MODIFICATIONS	2 & 5	BDS	AB/BDT	LJG	
04	02.07.99	PHASE 1 SUBSTAGE 2.3 MODIFICATIONS	2 & 5	BDS	AB/BDT	LJG	
05	05.10.99	UPDATE OF POINT SECURE INFORMATION	2 & 5	BDS	BDT	TJG	LJG
06	27.03.01	APPROACH ROADS TO SIDINGS 9-18 REVISED TO SITE INFO.	3 & 5	GD	MD	MB	MD
07	20.08.04	UPDATED TO CURRENT SITE CONDITIONS.	2 & 5	GD	JCF	VSW	
08	02.01.05	7 CAR MODIFICATION.	2, 3 & 5	BDS	VSW		VSW
09	30.01.06	DEPOT COMMISSIONING AREAS - ENABLING WORKS	2 & 5	GD	MB/VSM	MBS	JDEC
10	19.07.06	DEPOT COMMISSIONING AREAS - DVTD TEST TRACK POWER ENABLING WORK.	3 & 5	GD	KD	DA	MD
11	20.09.06	DEPOT COMMISSIONING AREA ENABLING WORK & OLD 6 CAR WALKWAY CURRENT RAIL GAPS (ROADS 4 TO 33 & ENGINEER'S SHUNT) REMOVED. OVERHEAD BUS BAR (D.C.) SYSTEM ADDED IN WORKSHOP SHED. (ROADS 35 TO 45)	3 & 5	GD	KD	PP	MD
12	07.08.07	COMMISSIONING OF TEMPORARY FIT-OUT SHED	2 & 5	GD	IM	CR	VR
13	15.08.07	TRACTION ARRANGEMENTS ROADS 9-11 REVISED TO ACCOMMODATE TEMPORARY FIT-OUT SHED.	3 & 5	GD	RP	PP	MD
14	13.05.08	ROUTE INDICATOR REMOVED FROM TU20.	2 & 5	GD	GPCR	BE	BE
		TRACTION CURRENT SECTION SWITCHES TO ROADS 36 & 37 REPLACED WITH SECTION CONTROL PANELS.	3, 4 & 5	GD	MD	PP	MD
15	26.02.10	UPDATED FOR TBTC SIGNALLING. TRIAL OPS ONLY. 02.04.2010.	2 & 5	GD	GD		
16	27.04.10	L.U. AND TUBE LINES COMMENTS ADDRESSED. SPT's REMOVED.	2 & 5	GD	GD	IM	
17	06.12.10	RGIs ADDED TO TRACTION PLAN	3 & 5	GD	GD	PP	
18	19.03.19	ADDED DC TRACK FEEDER ROAD NUMBERS & COLOUR LABELS. CHANGED WORKSHOP ROADS 36 & 37 LINESYLE TO CHEVRON (GCR)	3, 4 & 5	MD	OB	RA/PM	EC


**INDEX**

APPROVED	[REDACTED]	ISSUE
DATE	20/3/19 27/3/14	18

SHEET	01	02	03	04	05	06							
ISSUE STATUS	02	11	09	03	18	02							

6140-TS-107104/5

LONDON UNDERGROUND LIMITED  
JUBILEE LINE  
STRATFORD MARKET DEPOT  
DIAGRAM OF SIGNALLING  
AND  
CURRENT RAIL SECTIONS  
FOR  
TRAFFIC CONTROLLER

APPROVED		ISSUE
DATE	10-6-99	02

6140-TS-107104/6